

# ART

## KS5 (Edexcel A Level Art and Design)

### Course Overview

In Year 13, A-Level Art students refine their skills and complete major projects. The Personal Investigation, 60% of the final grade, involves deepening their chosen theme, advancing techniques, and completing a comprehensive written study (1000-3000 words). The Externally Set Assignment, 40% of the grade, begins in February with theme exploration and culminates in a 15-hour supervised final piece.

YR13



### Course Content and Skill Development

#### Component 1 Personal Investigation

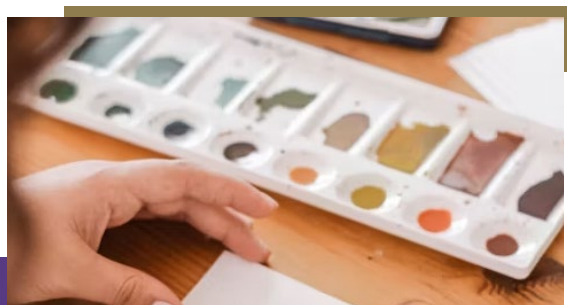
- Internally set, assessed by the teacher and externally moderated.
- Availability: May/June
- 60% of the total qualification

#### Component 2 Externally Set Assignment

- Externally set, assessed by the teacher and externally moderated.
- 40% of the total qualification

Both components assessed against the following criteria:

- **AO1** - Develop ideas through sustained and focused investigations informed by contextual and other sources, demonstrating analytical and critical understanding
- **AO2** Explore and select appropriate resources, media, materials, techniques and processes, reviewing and refining ideas as work develops
- **AO3** Record ideas, observations and insights relevant to intentions, reflecting critically on work and progress
- **AO4** Present a personal and meaningful response that realises intentions and, where appropriate, makes connections between visual and other elements.



### Specification link

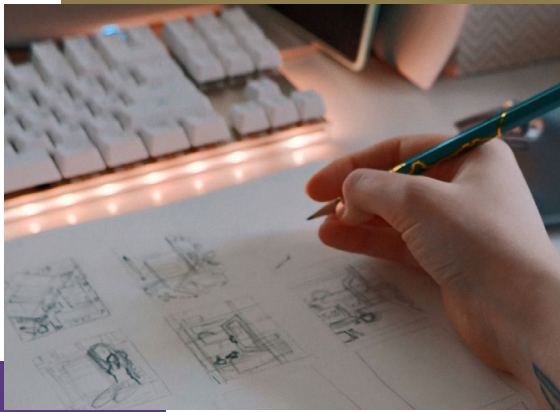
<https://qualifications.pearson.com/content/dam/pdf/A%20Level/Art%20and%20Design/2015/specification-and-sample-assessment-materials/gce-a-level-art-and-design-specification-issue-4.pdf>

## When and how assessment of learning will happen (throughout the course)

The Externally Set Assignment is set by Pearson and will be released on 1 February in the year of assessment. This will be available on our secure website on 1 February and hard copies will be dispatched to centres based on entries.

## The final exams/ assessment

The exams will be completed in 15 hours around Easter.



## Independent Learning Expectations

Independent learning in A-Level Art involves continuing to investigate projects outside of lessons. Students should aim to complete approximately 1 hour of independent study for each hour of contact time in lessons. This study should include:

- **Investigating Projects:** Extending classroom learning by exploring projects independently.
- **Real-Life Engagement:** Collecting observational references and first-hand encounters with subject matter.
- **Research and Exploration:** Studying various artists, movements, and techniques to inspire and inform personal work.
- **Sketchbook Work:** Documenting ideas, experiments, and progress.
- **Experimentation:** Trying out different materials, techniques, and styles.
- **Gallery Visits and Exhibitions:** Visiting art galleries, museums, and exhibitions to gain broader understanding and inspiration.

